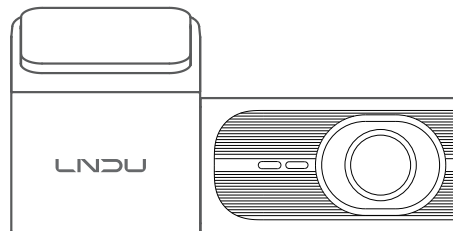


LINGDU



service@lingdu.us

Response in just 12 hours



Product	Car Dashcam
Manufacturer	Dongguan Lingdu Electronic Technology Co., Ltd
Address	1 Longcheng Street, Qingxi Town, Dongguan City, Guangdong Province, China
Product Warranty	One-Year Limited Warranty
Customer Support	service@lingdu.us

www.lingdu.us



FCC ID: 2BEAP-V630

V100

User Manual

Model: V100

We Create the Technologies

Table Of Contents

1. English.....	01
-----------------	----

✉ service@lingdu.us

Response in just 12 hours

Scan QR code to download LINGDU APP




The default password: 12345678

Index

1. Customer Service	02
2. Important Safety Information	03
3. In The Box	05
4. Specification	06
5. Product Diagram	07
6. Getting Started	09
7. Installation	11
8. Playing Video Files Using Your Smartphone	12
9. General Setting	21
10. Playing Video Files Using Your Computer	26
11. Firmware Update..	29
12. FAQ	30
13. Notice	32

1. Customer Service

-  Defective or damaged item?
Inaccurate description?
Missing parts or accessories?
Performance or quality not adequate?
Wrong item was sent?

 service@lingdu.us
Response in just 12 hours

Contact us before returning the item.
We will help you resolve any issue asap.

 **Note:**

1. A U3 type microSD card (Not included) is required to use this Dash Cam. Be sure to format your microSD card with your dash cam for the first time use.

2. Important Safety Information

Thank you for purchasing this LNDU dashcam. This instruction manual contains information on how to operate your dashcam. Before using your dashcam, we recommend that you read through this manual to ensure correct usage.

To improve the performance of the product, the contents of this manual are subject to change without prior notice.

·Do not disassemble, repair, or modify the product yourself.

Doing so may cause fire, electric shock, or malfunction. For internal inspection and repair, contact the service center.

·If any foreign matter gets inside the product, detach the power cord immediately.

Contact the service center for repair.

·Do not adjust the product while driving.

Doing so may cause an accident. Stop or park your car in a safe place before installing and setting up the product.

·Do not install the product in a location where the product can interfere with the driver's field of vision.

Doing so may cause an accident.

·Do not use a damaged or modified power cord. Only use the cords provided by the manufacturer.

Damaged or modified power cords may cause an explosion,

·Do not operate the product with wet hands.

Doing so may cause electric shock.

·Do not install the product in an environment with high humidity, or combustible gases or liquids.

Doing so may cause an explosion and/or fire.

·Do not leave the product near infants, children, or pets.

There is a risk of them swallowing small components, and/or their saliva may get into the product, causing an explosion due to a short circuit.

·Do not spray water or wax directly onto the product while cleaning the inside of the car.

Doing so may cause fire, electric shock, or malfunction.

·If smoke or an unusual smell is emitted from the power cord, detach the power cord immediately.

Contact the service center or your distributor.

·Keep the terminals of the power cord clean.

Failure to do so may cause excessive heat and fire.

·Use the correct input voltage.

Failure to do so may cause explosion, fire, or malfunction.

·Plug in the power cord firmly so that it cannot easily be disconnected.

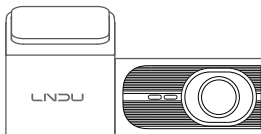
Failure to do so may cause fire.

·Do not cover the product with any material.

Doing so may cause external deformation of the product or fire. Use the product and peripherals in a well-ventilated location.

3. In The Box

Check the box foreach of the following items before installing the dash cam.



Dash cam*1



Cable clips*5
Pry tool*1



Type-C car charger
with 3.5m/12ft cable*1



Electrostatic film*2



User manual*1

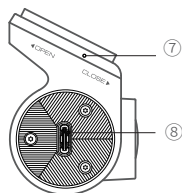
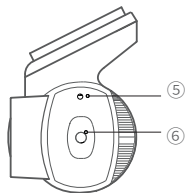
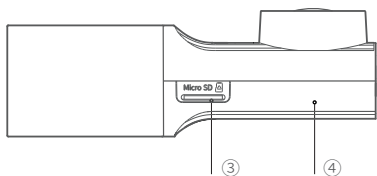
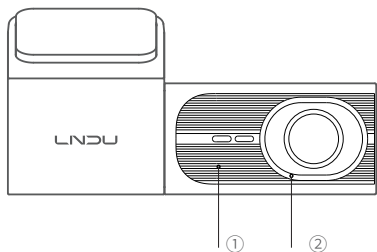


Note:
1.To improve the performance of the product, the contents of this manual are subject to change without prior notice.

4. Specification

Model Name	V100
Color	Black
Language	English / 日本語 / Deutsch / Français / Español / Italiano / Русский и.etc
Memory Card	Micro SD Card Class 10, U3 Speed, Max Support 256 GB (Not included)
Video Compression Mode	MP4
Photo Format	JPG
Video Code	H.264
Video Resolution	2K
WiFi	Built-in
Battery	/
Power Interface	5V/1.5A
Operation Temperature	-20°C to 70°C (-4°F to 158°F)

5.Product Diagram



#	Description
1	Speaker port
2	Forehead
3	TF card slot
4	Housing, support 360° rotation
5	Mic port
6	Button/LED indicator Long press for 3 seconds to turn it off Long press for 10 seconds to default reset
7	Bracket
8	Type-c power interface



Note:

The clock is displayed during normal recording, while the recording duration of the locked video segment is displayed during emergency recording.

6. Getting Started

The camera is designed to power up and record automatically when it receives power. Then saves the video record and turns off automatically when the car shuts off.

1. Auto Power ON/OFF:

Plug car charger to cigarette lighter socket. When the car engine is on, dash cam will turn ON and start recording automatically.

When the car key is turned to LOCK position, dash cam automatically saves the recording and turns OFF.

2. Manual Power ON/OFF

Manually Turn ON: Press the power button once. Manually Turn OFF: Press and hold the power button for at least 3 seconds.

Note:

1. A U3 type microSD card (Not included) is required to use this Dash Cam. Be sure to format your microSD card with your dash cam for the first time use.
2. Please ALWAYS connect with power when using.
3. The dash cam will automatically update its time when it is connected to the LINGDU APP on a phone via WiFi.
4. Some trucks/cars's 12V cigarette outlet is always HOT, which means it provides constant power even when the car is turned off and locked. If this is the case for your vehicle, then the auto ON/OFF feature will not work. And if you leave the camera


continuously recording when the car is turned off, then it will drain your car/truck's battery and you might not have enough power to start your car for next time. To remedy this situation, you can do one of the two options:

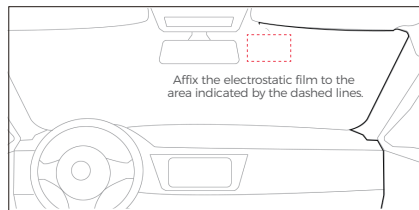
- ① Hardwire your dash cam to your car's fuse box with 3-Lead Auto Trigger Hardwire Kit.
- ② Change the connection in the fuse box for your 12V outlet to socket which only supplies power when car key is turned to ACC or ON position.

7. Installation

1. Install the electrostatic sticker

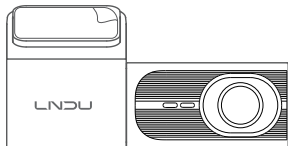
To install the electrostatic sticker, affix it to the front windshield within the area indicated by the dashed lines. Before installation, please wipe the installation area clean to ensure that the electrostatic sticker adheres tightly and to expel any air bubbles between them.

 Installation tip: For optimal coverage of the camera's field of view, mount the recorder in the middle of the front windshield.



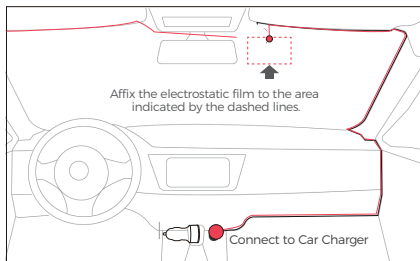
3. Attach the Recorder

Peel off the 3M adhesive protective film, attach the recorder bracket to the electrostatic sticker, and adjust the recorder to a suitable angle.



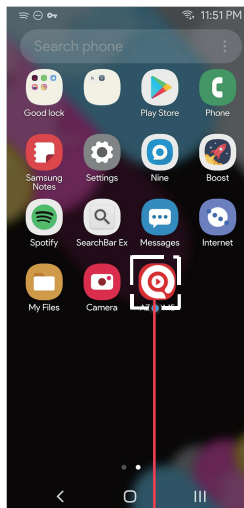
5. Route and Connect the Power Cable

As shown in the diagram, route the power cable along the top of the front windshield, through the A-pillar, and into the storage compartment on the passenger side. Position it near the cigarette lighter port, then connect it to the cigarette lighter power supply.



8. Playing Video Files Using Your Smartphone

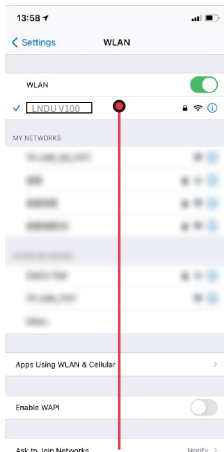
8.1 Check real-time video using your smartphone



Scan QR code to
download LINGDU APP

1

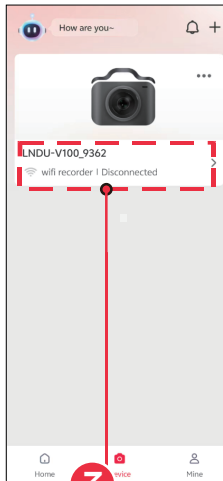
Search for the LINGDU app in the Google Play Store or Apple App Store and install it on your smartphone.



2

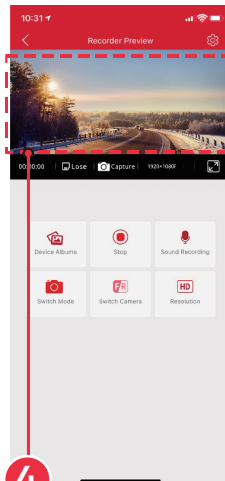
Go to Phone's Settings > WiFi > Select WiFi of the dash cam. After it's connected to the WiFi, it will say 'No Internet Connection' which was normal. Because dash cam WiFi is ONLY for video/photo transfer function, NOT made to broadcast footage over the cloud or internet, please ignore the prompt.

WiFi Name SSID: LNDU V100
Default PASSWORD: 12345678



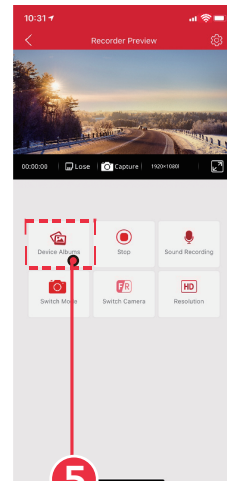
3

There will show dash cam model LNDU V100 when connect successfully. Press "Check Real-time Video" to live video preview interface.



4

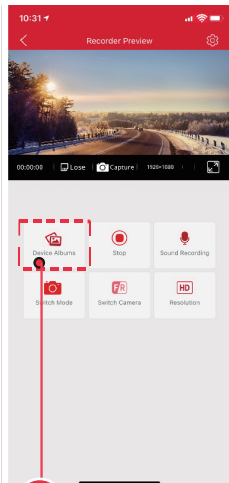
Now you can view the video currently being recorded real-time by connecting your smartphone to the dashcam via Wi-Fi Direct.



5

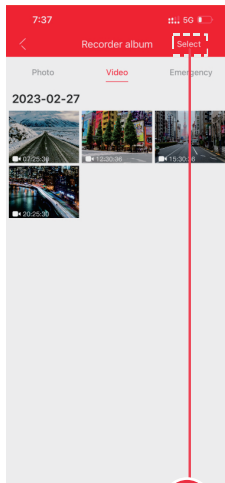
Please STOP recording first, then press the 'Device Album' to get Photo, Video, Emergency files.

8.2 Download the video files into your smartphone



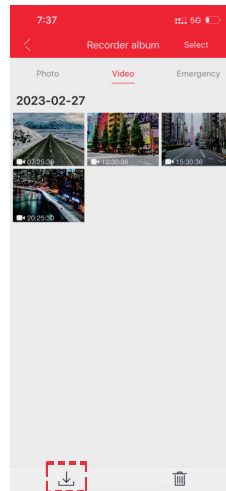
1

Go to Dashcam Preview interface. Please STOP recording first, then press the 'Device Album' to get Photo, Video, Emergency files.



2

Select the video files to download into your smartphone.



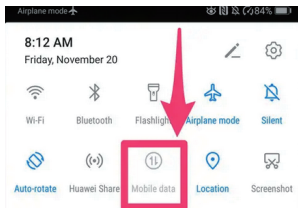
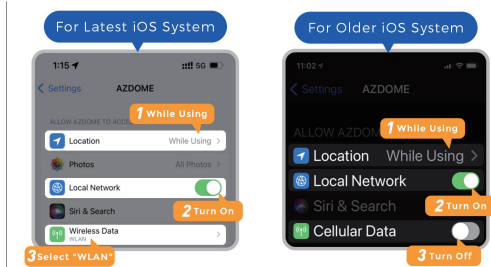
3

Press the icon to download the video files. However, it will take a bit of time to download one video file.

The app won't show the live video on your phone. It only shows a picture of the beach?

The cellular data will cause the live video not to be viewed. If the APP won't show the live video, please disable the 'LINGDU' cellular data of your phone. Sure that the Local Network of the 'LINGDU' is turned on.

1. For Latest iOS System: Setting→LINGDU→Click 'Wireless Data'→Select 'WLAN' .
2. For Older iOS System: Setting→LINGDU→Disable the 'Cellular Data'.



Note:

1. WiFi Direct lets you directly connect your smartphone to your dash cam via WiFi within a range of 10FT.
2. Once it is connected to the LINGDU APP it will automatically update the date/time.
3. The LINGDU is available for devices running Android 5.0 and higher, or iOS 9.0 and higher.

What is a WiFi Feature?

The WiFi feature has been designed so you can pair your dash camera wirelessly with your smartphone and access your recording instantly from the dash cam. Here you can view, download and share your videos easily with your friends and family. Just like how you would connect your Bluetooth speaker to your smartphone for wireless music play, the same way dash cameras use WiFi signal (instead of a Bluetooth) to pair your smartphone with LNDU V100.

Can I watch the videos around my car remotely?

NO. LNDU V100 dash cam is NOT made to broadcast footage over the cloud or internet. It is NOT a cloud or an IP camera and it is NOT meant to do that. You can get live video and footage on LINGDU dash cam's APP as long as you stay within the 10FT range from the dashcam.

What is the WiFi Range?

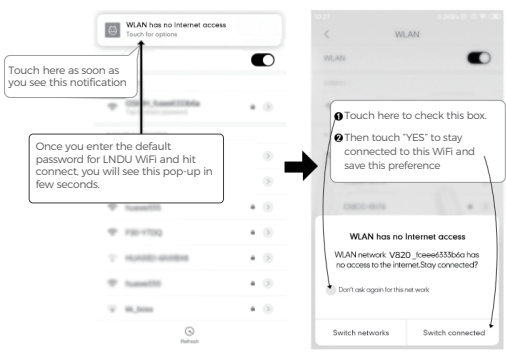
The WiFi signal range is about 10FT when there are NO obstructions in the middle. Please NOTE that just like your home WiFi network, you don't have WiFi signal outside your home, the same way, WiFi range is 10FT from this small device.

For Android phones:

When installing the LINGDU APP, it will have two pop-up prompts, select 'While using the APP' to allow LNDU V820 to access this device's location, and select 'Allow' to allow LNDU to access photos and media on your device.

There is one extra step you will have to take for the first time. Once you connect to the WiFi of V100, it will say 'No Internet'.

Which is fine. Wait about 10-15 seconds until you see the below pop up or notification. You just have to tap on the pop up notification that will show up in few seconds to select that you still want to stay connected even though there is NO Internet. Once you select this OK, you are set to go.



For iPhone:

The Wi-Fi network "LNDU- V100 -5G_066438" does not appear to be connected to the Internet

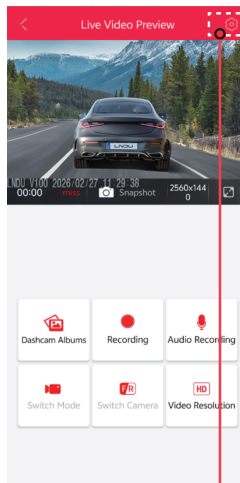
Do you want to temporarily use cellular data?

Use Cellular Data

Keep Trying Wi-Fi

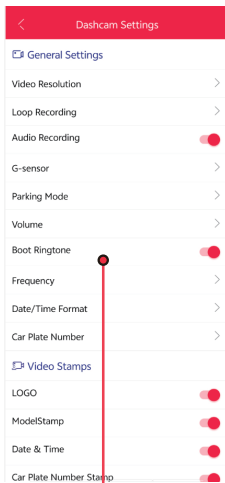
If you get this pop up for your iPhone while using WiFi feature, make sure to tap on 'Keep Trying WiFi'. Otherwise the camera will get disconnected from the WiFi and then you will have to forget the LNDU WiFi and then start to pair again to make it work again.

9. General Setting



Go to Dashcam Preview interface. Please STOP recording first, then press the settings icon.

21



Select what you need to set.

22

8.1 Video Settings

Video Resolution

1. 2560*1440 (2K)
2. 1920*1080 (1080P)

Loop Recording-1 min(Default) / 2mins / 3mins

Please select the length of each video clip (1/3/5 minutes) for loop recording. This function enables continuous recording on the dash cam. Please note that when the memory card becomes full, the dash cam will automatically delete the oldest files to make space for new recordings. This ensures that it can continue recording without interruption.

Audio Recording -On(Default)/Off

The dashcam has built-in microphone to record audio with video. You can choose to record mute video by choosing Off.

G-Sensor - Off/ Low(Default)/ Medium/ High

G-sensor is a 3-axis impact gravitational accelerometer, designed to detect physical and gravitational forces on the dash cam. Once G-sensor has been triggered due to physical or gravitational impact force on the camera, the current video file will be locked as an emergency file so it won't be deleted by loop cycle function. The higher the G-Sensor sensitivity is, the less force will be needed to trigger automatic file protection.

Parking Mode

This function will ONLY work when 3-Lead Hardwire Kit is installed properly, the output current of Hardwire Kit needs to reach 2.5A. Then select parking mode. This parking mode has two options to choose from.



Note:

Custom-designed Type-C 3-Lead Hardwire Kit is required to use this new feature. Not included in the packaging, on Amazon search: **Type-C 3-Lead Hardwire Kit for LNDU V100 Dash Cam**

• Time-Lapse Parking Mode:

1. When you turn OFF the car's engine and turn the key to the lock position. Then the camera will STOP the continuous video recording and it will go into the timelapse 1fps recording mode automatically.
2. Now while this timelapse is being recorded, if someone hits your car and if the impact reaches the set G-Sensor level, then the camera will start to record 1-min continuous video, save & lock that video in Event folder > then return to the timelapse 1fps recording.
3. Now when you start your car for the next time, the camera will automatically STOP the timelapse parking mode. Then it will go into normal video mode automatically to start the continuous video recording.

Volume -Off/ Low/ MID(Default)/High

This feature allows you to set the volume level for the boot sound volume, prompt volume through camera's internal built-in speaker.

Boot Ringtone - On(Default)/ Off

This feature allows you to turn ON/OFF the camera's Boot Ringtone.

Frequency – 50HZ/ 60HZ(Default)

Here you should choose the frequency according to your power supply specification used in your country based on your geographical location.

Date/Time Format

This feature allows you to select the date format.

Date/Time

Turn On/Off the Date/TimeStamp shown on recorded files.

LOGO

Turn On/Off the LINGDU logo Stamp shown on recorded files

Model

Turn On/Off the Model Stamp shown on recorded files.

Synchronize Time

It will Synchronize the phone system date/time.

SD Card Information

Storage information of memory card can be found here.

Format SD Card

The formatting process will make sure that the card's file system format is optimized for the camera.

Note: For stable performance, it is recommended that you format the memory card every 1-2 months.



Note:

Note: For stable performance, it is recommended that you format the memory card every 1-2 months. There are two ways to format Micro-SD card. 1. Press and hold WiFi button for 10 seconds to format and default settings, you will hear sound "di" when format successfully.

2. Please connect to LINGDU APP, using the function menu named "Format" to do.

WiFi Name

Here you can change the WiFi Name in APP, the default name: LNDU V100 *****

WiFi Password

Here you can change the WiFi Password in APP, the **default password: 12345678**

Default Settings

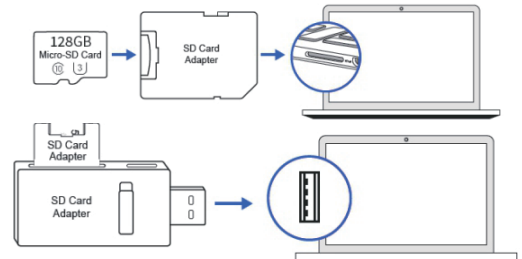
Reset the Dash Cam to default settings. Your recordings will not be affected.

Firmware Version

Here you can check the current firmware version installed on your camera. You will need this information in the future to check if newer version of firmware is available.

10. Playing Video Files Using Your Computer

1. Remove the microSD card from the dashcam.
2. Insert the card into the microSD card reader and connect it to your computer.



3. Depending on the pre-installed hard drives, you should be able to locate the added flash drive as drive "D," "E," or another name. Once you have located the drive, double-click it to access the file folders, which include Normal, Event, and Photo.
 - Normal: Normal recording mode saves video files in a loop, allowing them to be overwritten when storage space is needed.
 - Event: In Event recording mode, the video file will be locked and protected from deletion by the loop recording function.
 - Photo: This is the folder for storing captured photos. To play the videos, simply double-click on them.
 We recommend using VLC Media Player, which can be downloaded for free at: www.videolan.org

4. You can also download LINGDU GPS Player from www.Indu.com > **Support** > **Downloads** and install it on your computer.

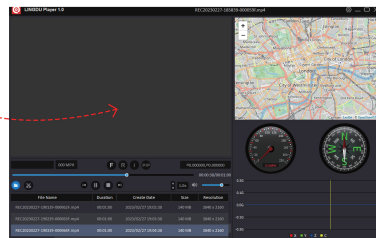
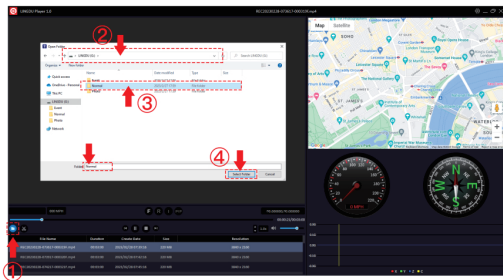
5. Install the LINGDU GPS Player on your computer.
(Note: Please close or ignore the prompt of the anti-virus software, we confirm that it will not bring any security impact to your computer.)

6. You can click the 'Open Files' button to browse and select the Movie or EMR folder of the microSD card on the LINGDU GPS Player. It will show all files in the Normal or Event or Parking folder. Or you can also drag the video files directly to the launcher screen.

7. There are two ways to play video. A. Click File-Open icon to choose the folder which you want to play, click to start play.

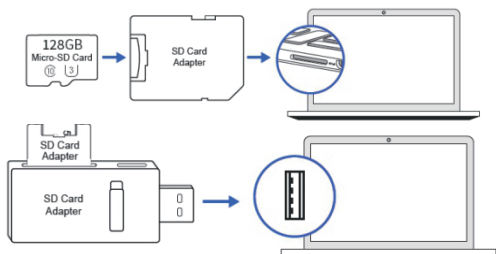
(Note that you can ONLY select one folder to play and see no video files)

B. Wählen Sie „Arbeitsplatz“ aus, suchen Sie die Speicherkarte und wählen Sie die Videodatei aus, die Sie wiedergeben möchten. Sie können die Datei per Drag & Drop direkt auf den Player ziehen. Sie können die GPS-Informationen auf dem Player abrufen.



11. Firmware Update

- 1.Remove the microSD card from the dashcam.
- 2.Insert the card into the microSD card reader and connect it to your computer.



3. Download the latest V100 Firmware from www.In-du.com> Support > Downloads on your computer.
4. Unzip the downloaded firmware (Zip file) and copy the firmwarefile named "FW96562A.bin" to the root directory of microSD card.
5. Connect the camera to the car charger to start the firmwareupdate process. You should see the upgrade progress bar which means your V100 dash camera is updating the new firmware.Please NOTE:
The firmware update may take up to about 1 mins. So please be patient. Make sure the POWER does NOT get disconnected whilethe firmware is being updated. Once the firmware is updated, the camera will turn OFF automatically.
6. You can turn on and check the latest firmware version by going into the APP's settings > Firmware Version.

12. Q&A

Q1: Camera turns ON / OFF automatically?

Ensure that the output current can reach 5V/2.5A and use our car charger.

Q2: Video Image is blurred?

Remove the protective lens film, clean the lens, make sure the windshield is clean and clear of grease, dirt, and debris.

Q3: Camera gets HOT?

It is normal for your camera to run slightly hot. Due to video being recorded at high speed, the dash cam may be hot during using. (No more than 158°F/70°C).

Q4: Video Files cannot be played on my computer?

The video files from the Dash Cam are in MP4 format and maynot be compatible with your PC if suitable playback softwareis notinstalled.

Q5: Video has no sound?

Ensure that'Audio Recording' setting is turned ON.

Q6: Video is blurred?


The Dash Cam has a minimum focalrange of around 2 meters. Objects closer than this are likely to become blurred.

Q7: Voice prompt Memory Error?

Using unqualified SD or third party cards can affect dashcam's performance and in some cases, force the dashcam to reboot randomly during recording. If it still can not work normally, it should be that the TF card is unqualified and can not meet the recording requirements of the dash cam. Please contact us to get a new memory card.

13. Notice

 This product complies with the radio interface requirements of the European Community.

 This symbol means the product must not be discarded as household waste, and should be delivered to an appropriate recycling facility. Recycling helps protect natural resources, human health and the environment. For more information on disposal and recycling of this product, contact your local municipality, disposal service, or the shop where you bought this product.

FC Changes or modifications not expressly approved by the party responsible for compliance could void the user's authority to operate the equipment.

This equipment has been tested and found to comply with the limits for a Class B digital device, pursuant to Part 15 of the FCC Rules. These limits are designed to provide reasonable protection against harmful interference in a residential installation. This equipment generates, uses and can radiate radio frequency energy and, if not installed and used in accordance with the instructions, may cause harmful interference to radio communications. However, there is no guarantee that interference will not occur in a particular installation. If this equipment does cause harmful interference to radio or television reception, which can be determined by turning the equipment off and on, the user is encouraged to try to correct the interference by one or more of the following measures:

- Reorient or relocate the receiving antenna.
- Increase the separation between the equipment and receiver.
- Connect the equipment into an outlet on a circuit different from that to which the receiver is connected.
- Consult the dealer or an experienced radio/TV technician for help.

This device complies with Part 15 of the FCC Rules.

Operation is subject to the following two conditions: (1) this device may not cause harmful interference, and (2) this device must accept any interference received, including interference that may cause undesired operation.

This equipment complies with FCC radiation exposure limits set forth for an uncontrolled environment. This equipment should be installed and operated with a minimum distance of 20cm between the radiator & your body. This transmitter must not be co-located or operating in conjunction with any other antenna or transmitter.